

seaware Routing®

onboard routing support

Graphical weather presentation and route planning providing predicted ship performance in terms of speed, fuel consumption and ETA. Weather supplied by StormGeo Weather Routing.

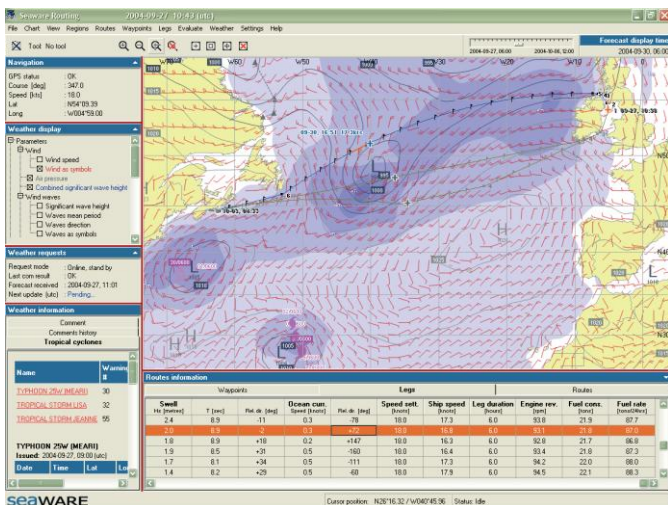
Seaware Routing® is an on board route planning system from the Seaware Onboard product line.

Main features

- Graphical weather presentation.
- Graphical route planning tools.
- Route comparison.
- GPS interface providing route import and position tracking.
- Automatic and manual weather request modes for flexible and efficient data transfer.
- Automatic route and performance updating.
- Route evaluation in terms of speed, fuel consumption and ETA.
- Daily ship-to-land reports.
- Easy installation and configuration.

User interface

The user interface is built around a chart on which selected weather parameters are graphically displayed.



Routes are built up by waypoints to form a sequence of legs. New routes are easily created and edited in an interactive fashion. Old waypoints or routes may be restored from a library, or, with a GPS connected, the active route may be imported to the system online.

Having a GPS connected allows the current ship position, speed and heading to be plotted on the chart.

Route evaluation

The system evaluates the expected ship performance along the routes taking into account the weather situation and the engine setting, as well as the ship main particulars and loading condition.

The results are presented for each leg individually as well as for the entire routes in terms of ships speed, fuel consumption and ETA.

StormGeo weather service and information

- Weather forecasts up to 10 days.
- Adjustable resolution forecast area and forecast length.
- Tropical cyclones and Ice limit N. Atlantic.
- Available 24 hrs.
- Forecast reliability and support available 24/7.
- Numerous additional services available.

Automatic operation

With a GPS connected, the system may handle several tasks automatically.

The requests for new weather data can be scheduled and administrated by the system, assuring that the optimal amount of data is transferred in order to lower the communication costs.

The routes will be adjusted to match the current ship position, and the remaining parts re-evaluated each time new weather data arrives.

The system may be configured to regularly transfer a routes summary by e-mail to one or more user-selectable address.

System requirements

- IBM PC or compatible, 766 MHz or faster.
- 256 MB RAM recommended.
- 250 MB free hard disk space.
- CD-ROM drive.
- 800 x 600 display (1024 x 768 recommended), 16-bit colour.
- Optionally one free PC COM port for GPS connection according to NMEA 0183, version 2.00.

Either of the following operating systems:

- Windows NT 4.0 Workstation, Service Pack 6a, Internet Explorer 5.0 or higher and Adobe TypeManager 4.1 or higher installed.
- Windows 2000/Windows XP.

In order to use online weather requests, the following is required:

- Network adapter with TCP/IP protocol.
- Dedicated e-mail account at e-mail server with support for SMTP and POP3 protocols (with attachments).

Contacts



NAUTISK FORLAG
NAUTICAL CHARTS AND PUBLICATIONS

Sales: sales@nautisk.no

seaware
A STORMGEO COMPANY

Technical issues: info@seaware.se