



# Admiralty Vector Chart Service



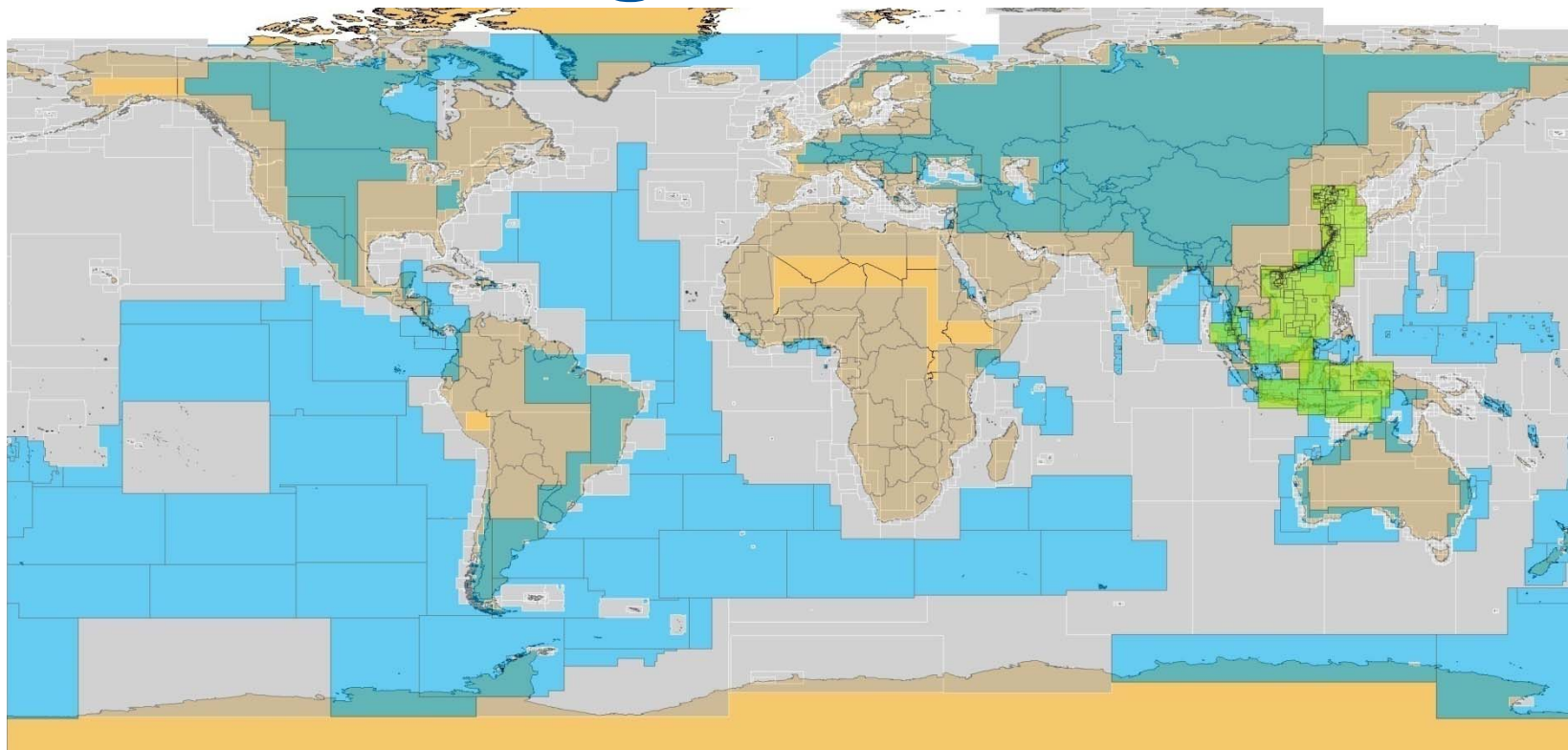


# Admiralty Vector Chart Service – do it once, do it right

- 100% ‘official’ data
- Best coverage available
- ‘Admiralty accuracy’ on-screen



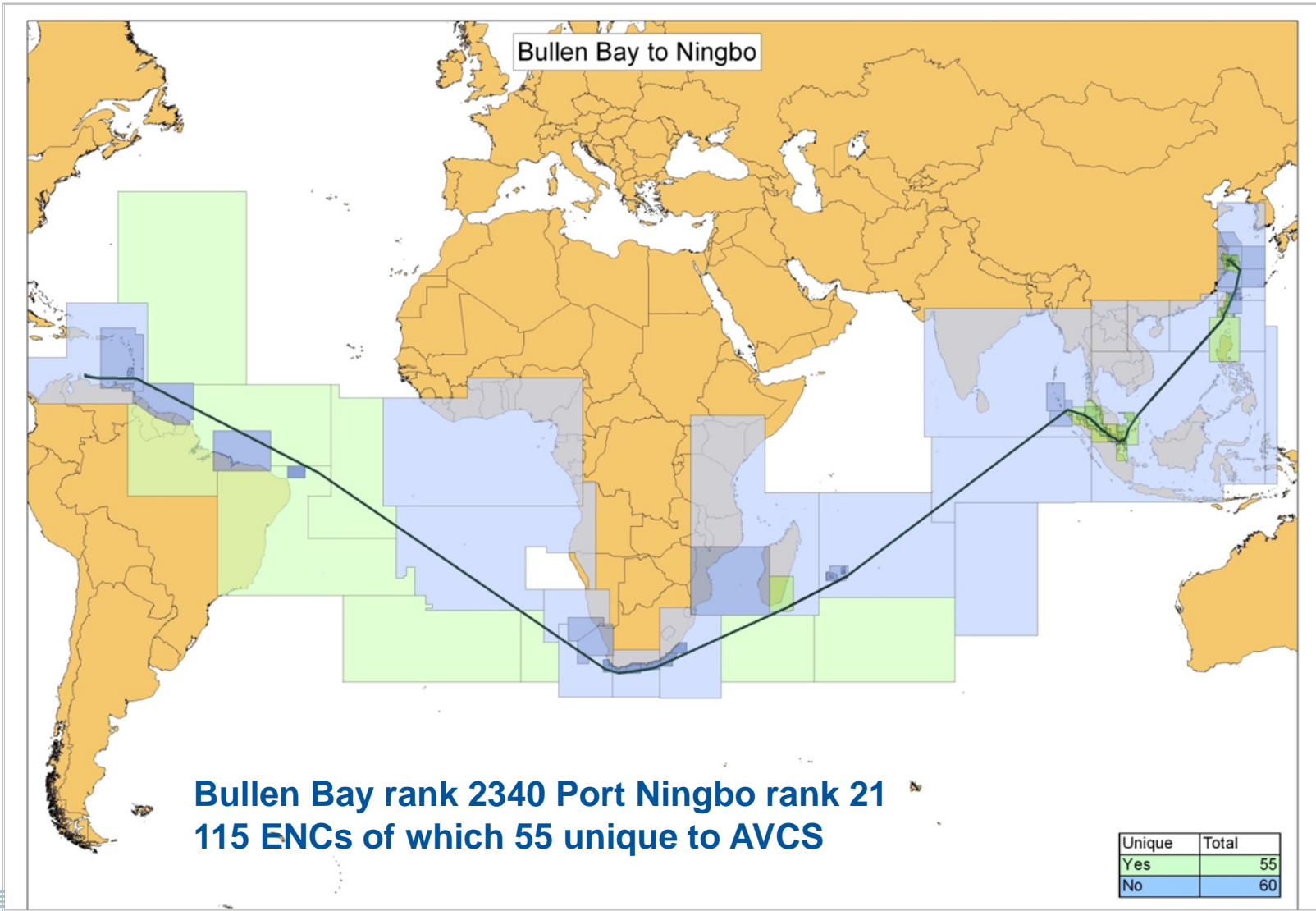
# ENC Coverage



+10,500 ENCs. Recent; China, Philippines, Indonesia

Scales for full berth to berth

Navigable coverage +2150 ports and routes. +460 unique to AVCS



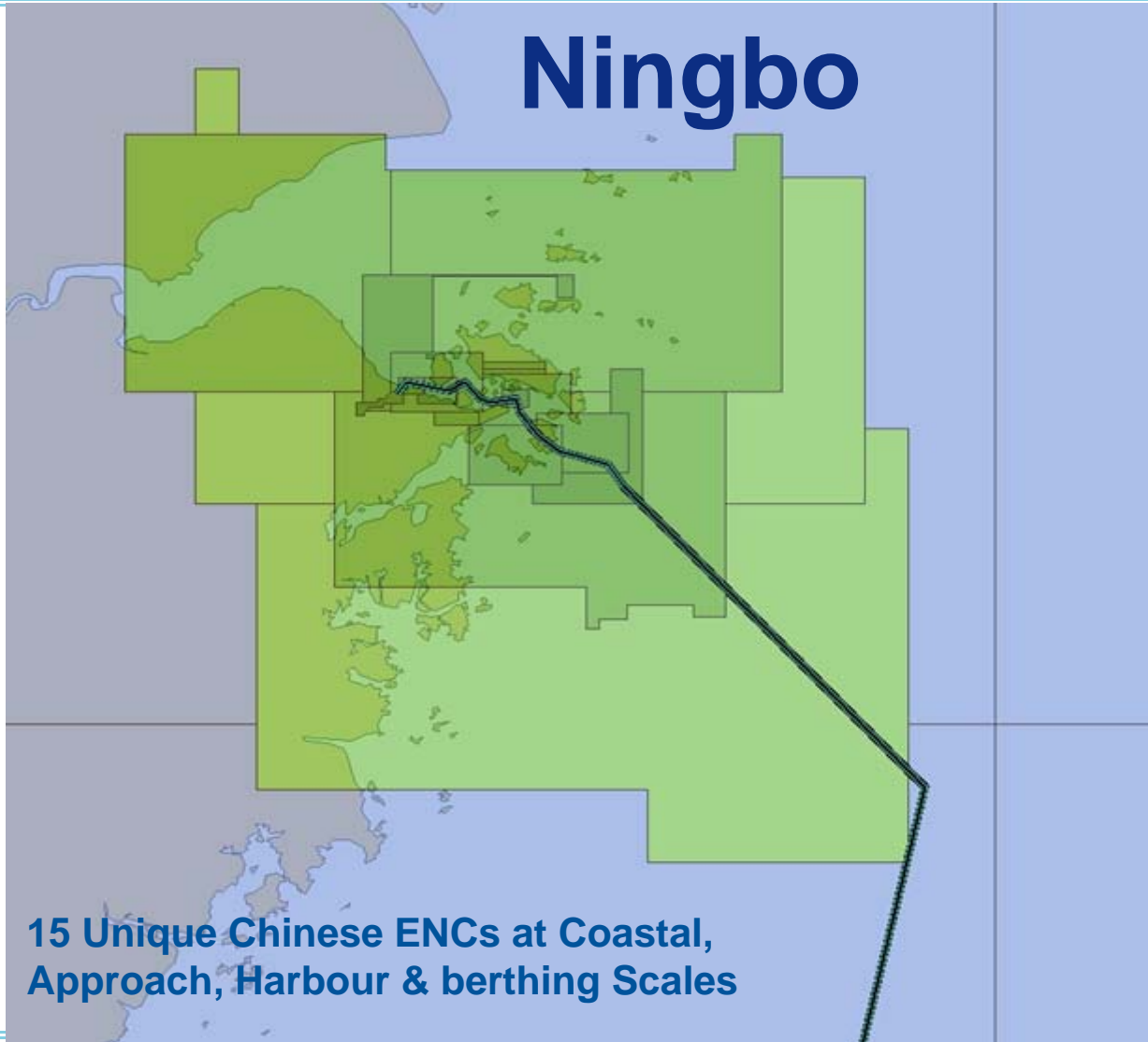


# Malacca & Singapore Straits

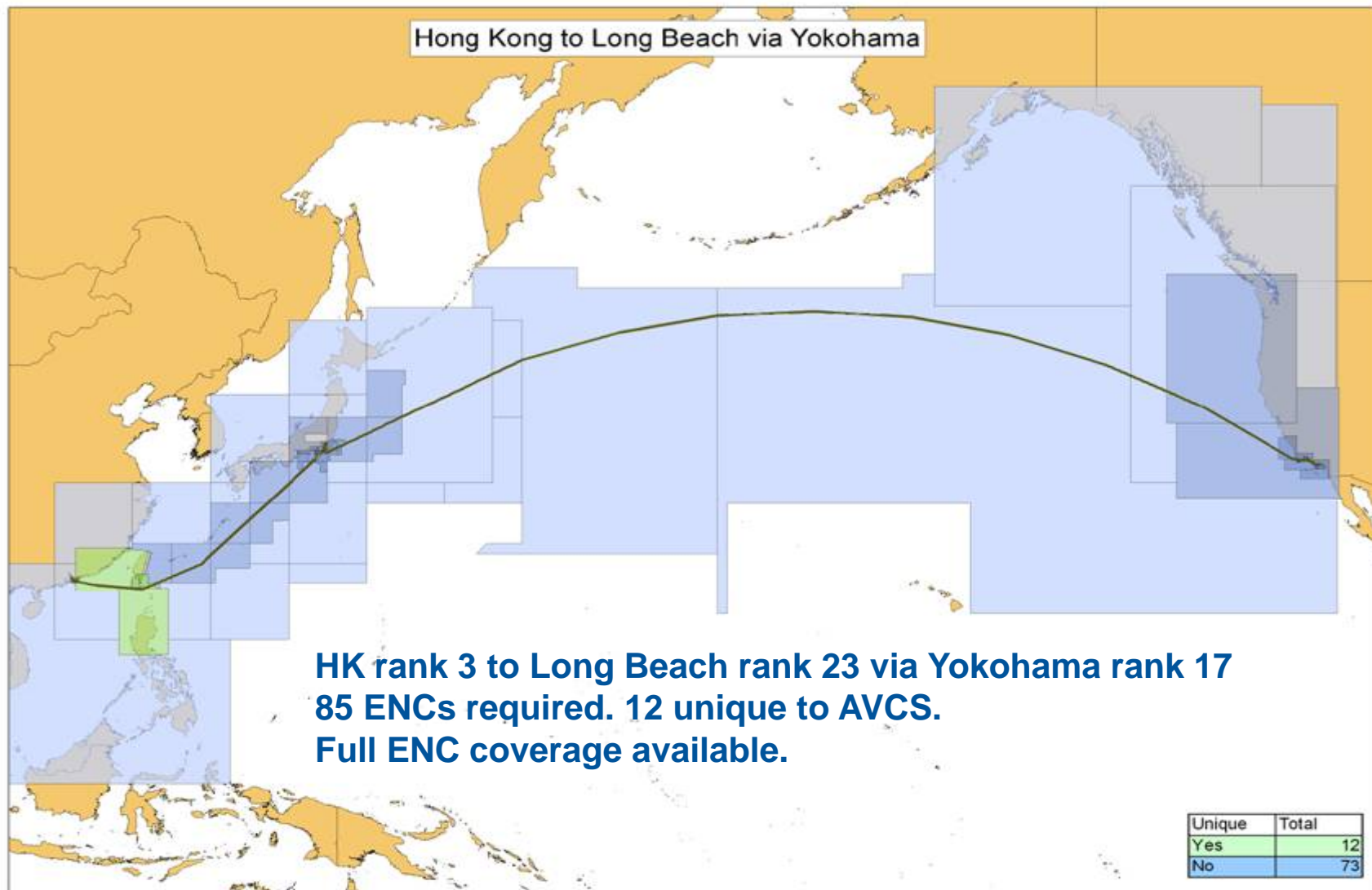
**25 unique GB consortium ENCS  
At Coastal and Approach scales**

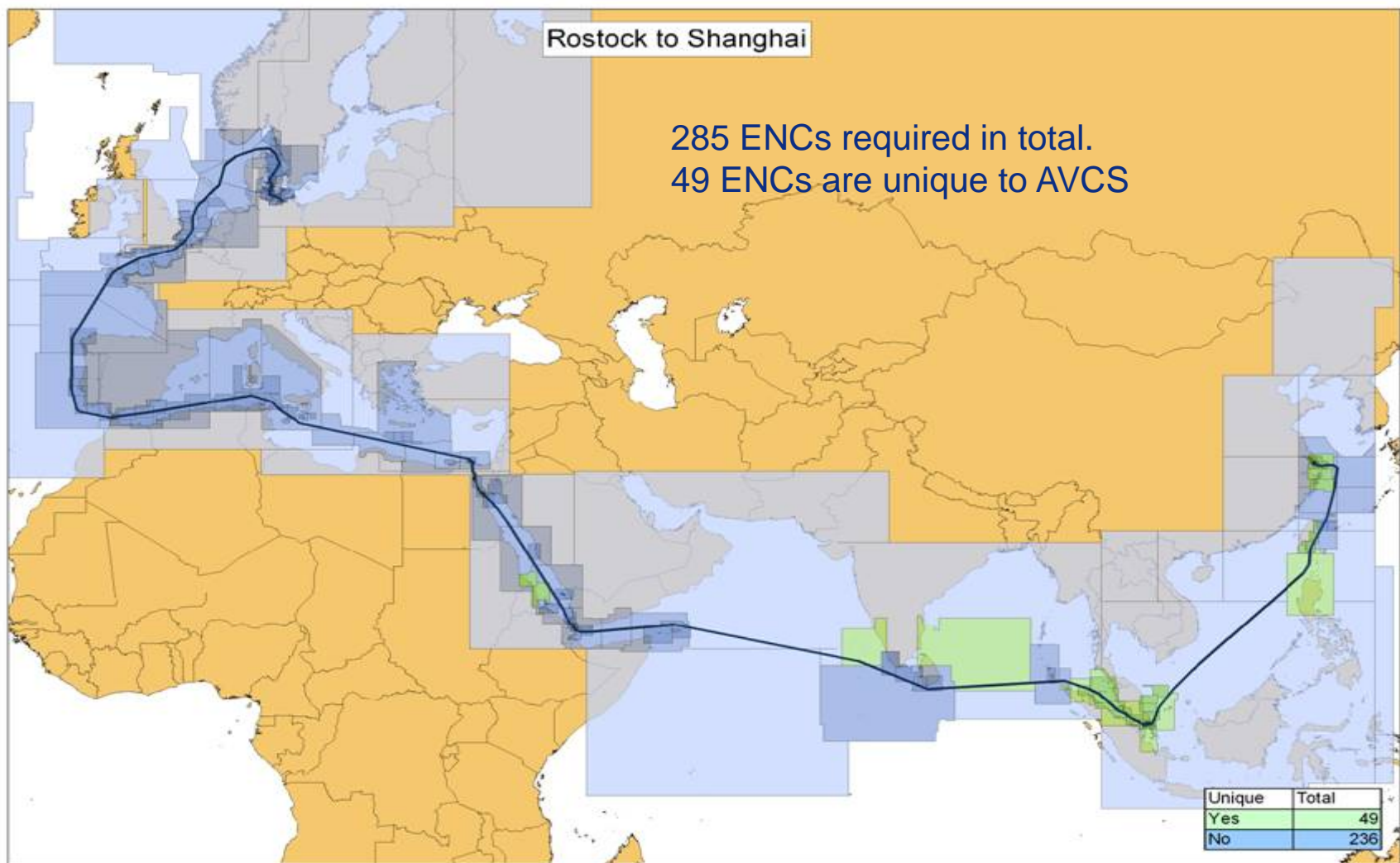


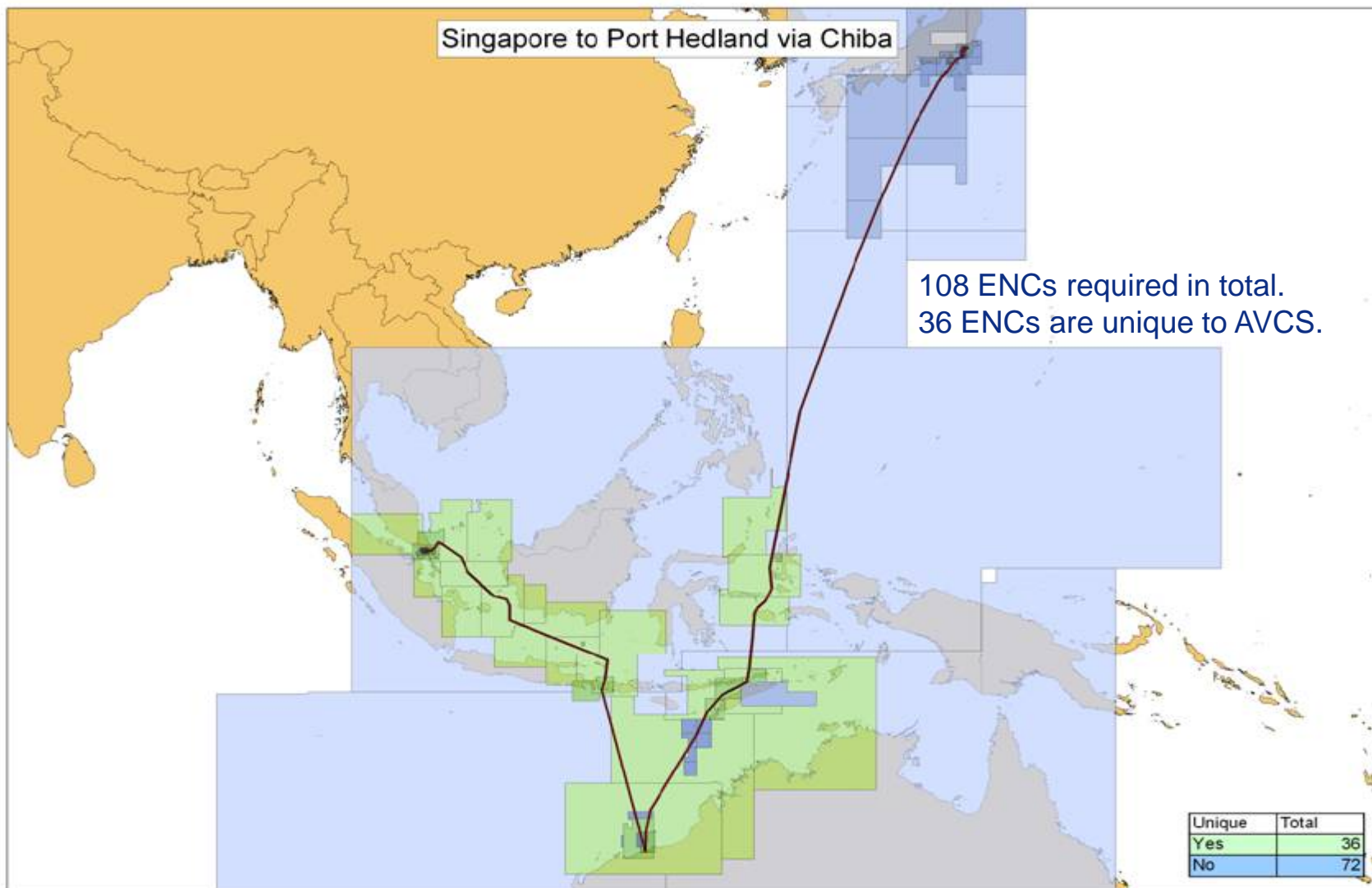
# Ningbo



**15 Unique Chinese ENCs at Coastal,  
Approach, Harbour & berthing Scales**

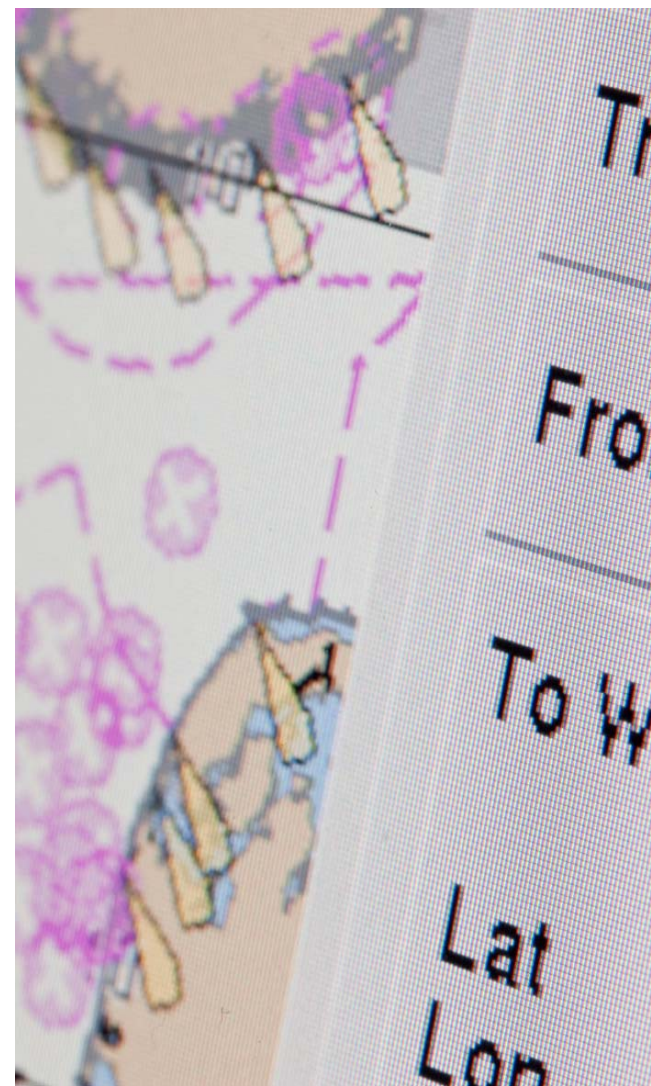






# Easy to use

- Install from CD/DVD
- 'Unlock' what you need using code
- Clear, layered information.



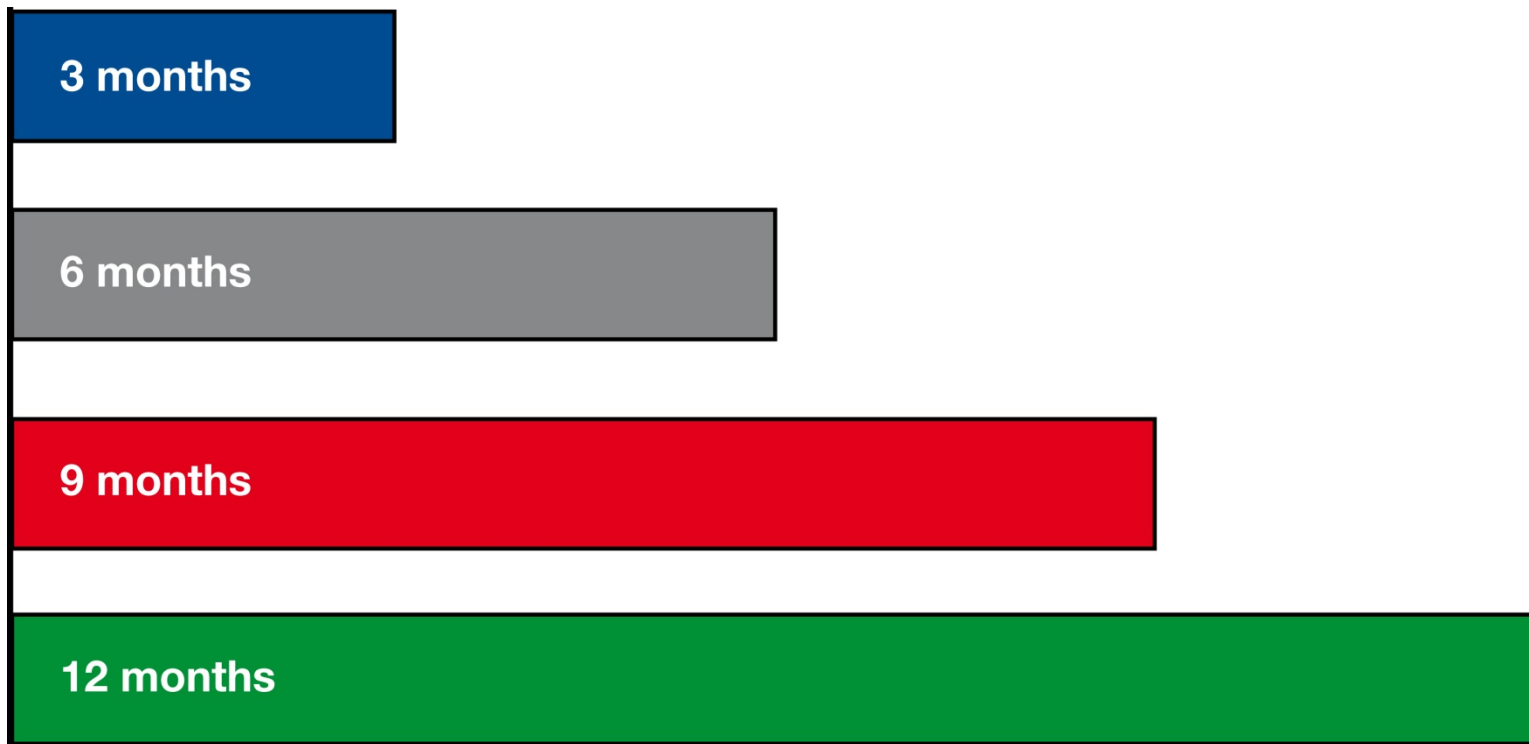
# Easy to update

- Updates via CD/online
  - NMs, New Editions, Replacements
- Assures accuracy, saves time
- No need for updating skills



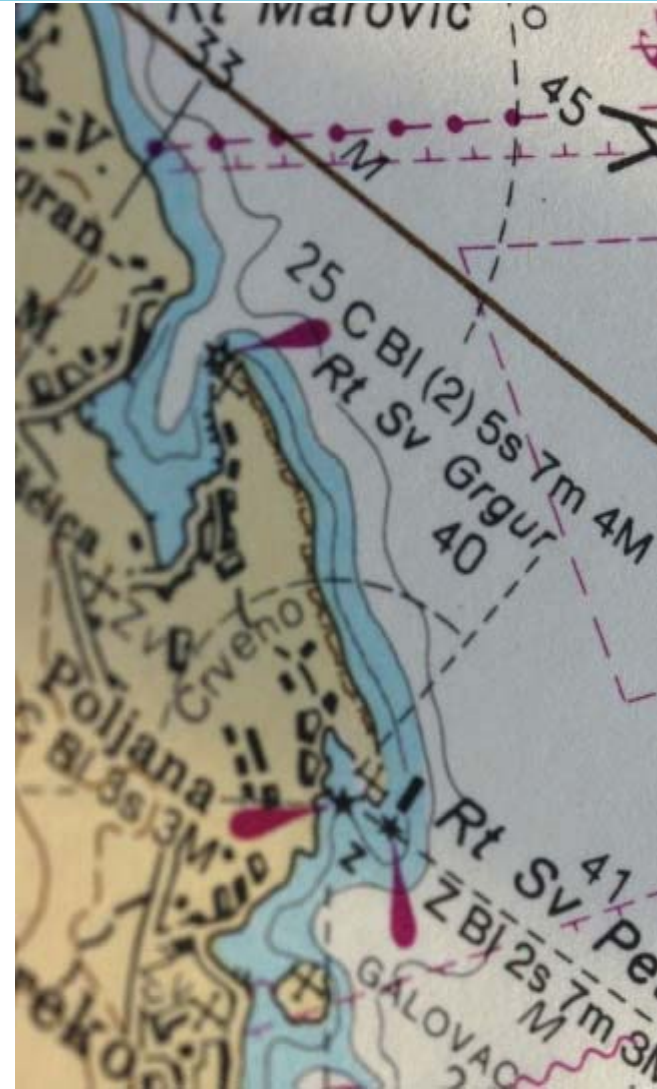


# Flexible Licensing



# Admiralty Information Overlay

- AIO assures 'Admiralty data' delivered digitally, worldwide
- Admiralty Temporary and Preliminary Notices to Mariners (T&Ps NMs) and other significant information included



The screenshot shows a software application window with a menu bar (File, User settings, Tools, View, Report, Help) and a toolbar. The main area displays a map of Japan with various depth soundings. A red box highlights a specific location on the map, labeled "4994(T)/07". An arrow points from this box to a pop-up window titled "33° 30.962'N 129° 36.219'E WGS84".

The pop-up window has tabs for "Summary", "Features", "Notes", and "Pictures". The "Summary" tab is active, displaying the following text:

**Temporary Notice to Mariners: 4994(T)/07**  
Positions quoted in the Temporary Notice reproduced below are referred to WGS84 or a compatible datum and may be plotted directly on this ENC. The ENC cells affected have NOT been updated to include these changes.

4994(T)/07 JAPAN - Kyushu - North Coast - Azuchi O Shima North-eastwards - Depth.

Source: Japanese Notice 29/777(T)/04

1. A shoal depth of 28m exists in position 33° 30' 55.2"N., 129° 36' 09.9"E.
2. Former Notice 4401(T)/07 is cancelled.

Buttons at the bottom of the pop-up window include "Close", "Cancel", "Apply", and "Help".



# AVCS TICKS ALL THE BOXES

Carriage compliant



Remote updating



Best coverage



Free digital catalogue



Quality assurance



Value added data



All available ENC's on CDs



One stop shop



Folio format or individual charts



3 month free trials



Platform for the future



24/7 access



*The ticks say it all....*